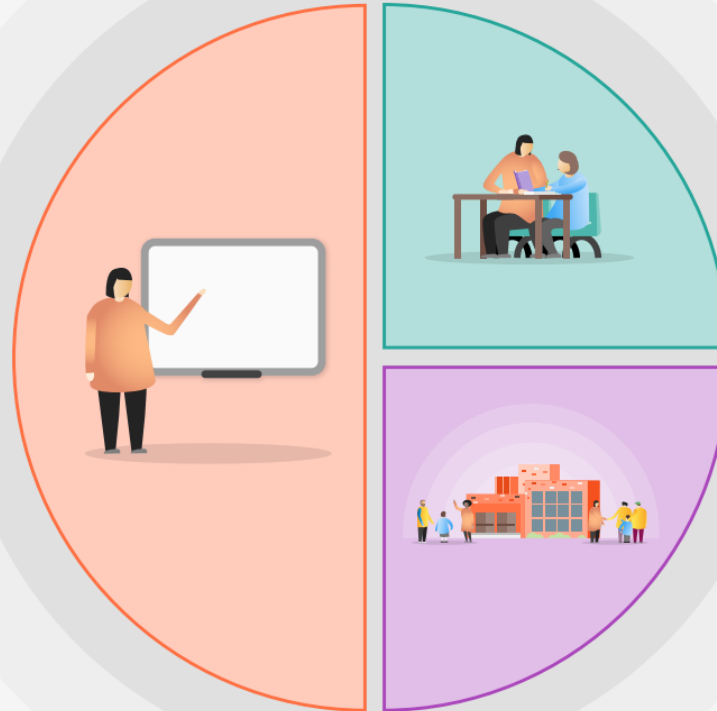


Guide to supporting school planning: A stepped approach

1 Teaching

- e.g., focus on critical aspects of literacy and numeracy to teach well
- e.g., support staff and teachers through evidence-informed PD.



2 Targeted academic support

- e.g., focus on critical aspects of literacy and numeracy to teach well
- e.g., support staff and teachers through evidence-informed PD.

3 Wider strategies

- e.g., Whole-class lessons on identifying emotions and self-regulation strategies
- e.g., Home learning focuses on independent practice (with prompts and keywords for parents and students)